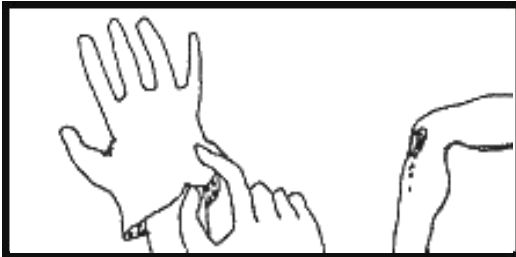


## Gloving

Wash hands prior to using gloves if hands are visibly soiled.



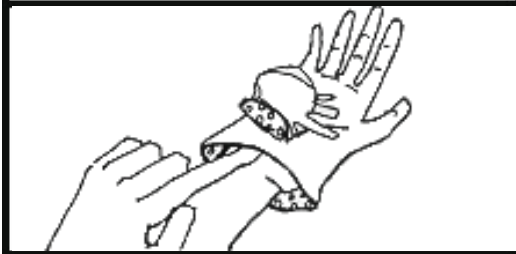
Put on a clean pair of gloves.



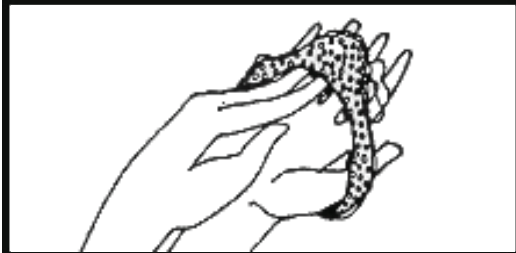
Provide the appropriate care.



Remove each glove carefully. Grab the first glove at the palm and strip the glove off. Touch dirty surfaces only to dirty surfaces.



Ball-up the dirty glove in the palm of the other gloved hand.



With the clean hand strip the glove off from underneath at the wrist, turning the glove inside out. Touch dirty surfaces only to dirty surfaces.



Discard the dirty gloves immediately in a step can. Wash your hands.

Note that sensitivity to latex is a growing problem. If caregivers/teachers or children who are sensitive to latex are present in the facility, non-latex gloves should be used.

Adapted with permission from: California Department of Education. 1995. *Keeping kids healthy: Preventing and managing communicable disease in child care*. Sacramento, CA: California Department of Education.